



**THOMPSON
RIVERS
UNIVERSITY**

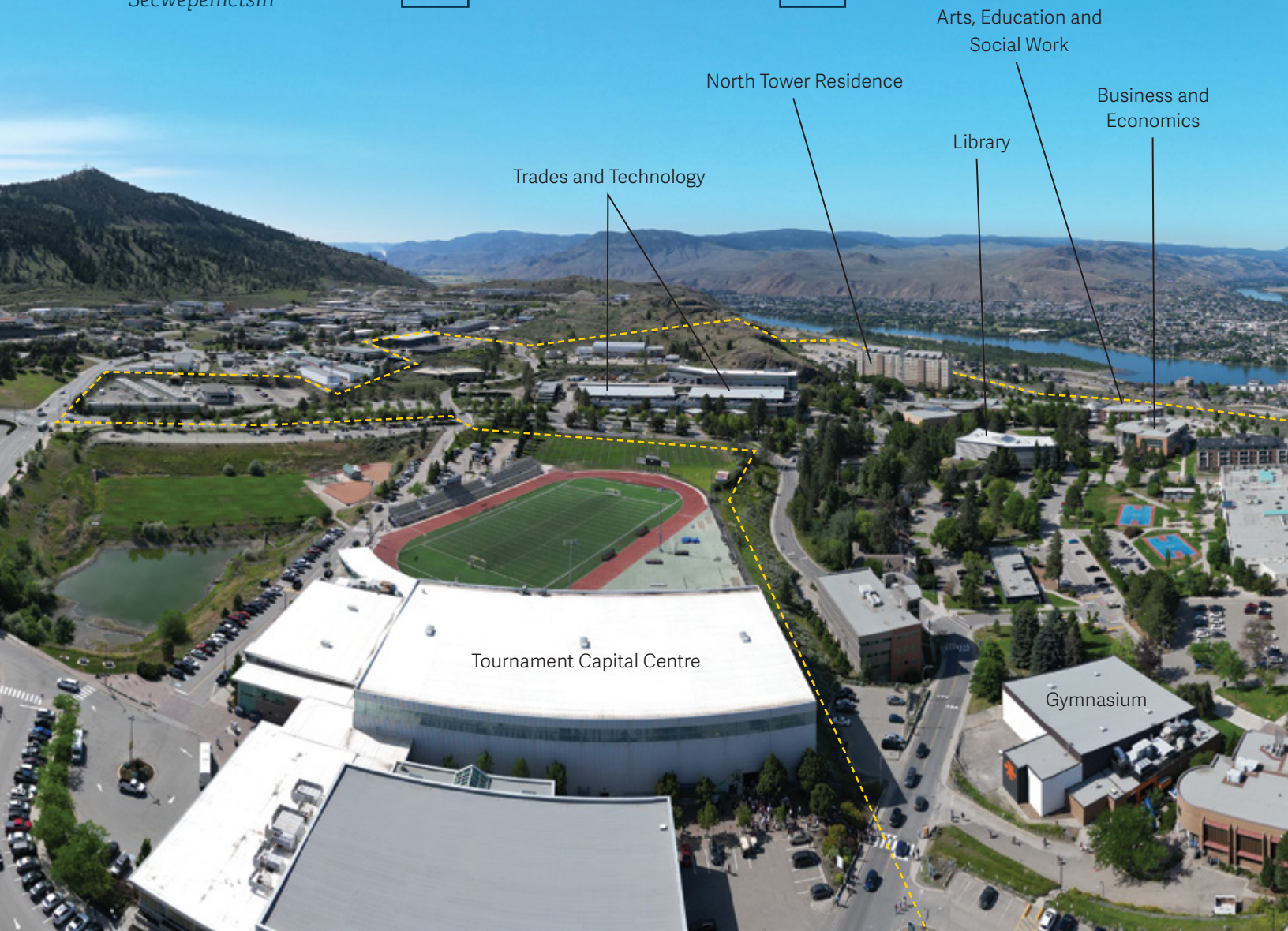
DRIVER

2024-25 VIEWBOOK
KAMLOOPS, BC

WELCOME

Weyt-kp

Secwepemctsin



Territorial Acknowledgment

Thompson Rivers University campuses are on the traditional lands of the Tk'emlúps te Secwépemc (Kamloops campus) and the T'exelc (Williams Lake campus) within Secwepemcúl'ecw, the traditional and unceded territory of the Secwépemc. The region TRU serves also extends into the territories of the St'át'imc, Nlaka'pamux, T'silhqot'in, Nuxalk, Dakelh, and Syilx peoples.



Adventure,
Culinary Arts
and Tourism
Management

Science

Nursing

East Village Residences

McGill Residence

Law



Hadih
Northern Dakelh

ʔéx kʷ n̓
Nlaka'pamux

Atelihai
Inuit/Inuktitut

Dahooja
Southern Dakelh

way̓
Syilx

Aniin
*Ojibway/
Anishinaabe*

hunilht'ih
Tsilhqot'in

k'álhwá7acw
Lillooet/Státimcets

Tawnshi
Michif

Tansi
Cree

Yaw
Nuxalk

CHOOSE YO

Start at TRU, go anywhere. This is just a snapshot of some of the subjects you can study here. Dive deeper into your interests with program majors and minors.

Visit tru.ca/programs for more information.

Craving adventure?

ADVENTURE & TOURISM |

pages 25-26

Adventure Studies
Tourism, Sport, Resort and
Event Management



Intrigued by the world around you?

Looking to build creative thinking and communication skills?



ARTS | pages 26-27

Literatures	Digital Journalism
Languages	Public Relations
Performing Arts	Philosophy
Environment	History
Culture	Politics
Society	Psychology
Communication	

BUSINESS & ECONOMICS | pages 27-28

Accounting & Finance
Economics
Human Enterprise & Innovation
Management, International Business
Information & Supply Chain
Marketing



Have big entrepreneurial dreams?

EDUCATION & SOCIAL WORK | pages 28-29, 33

English Language Learning and Teaching
Education
Social Work & Human Service
University and Employment Preparation



Interested in teaching or helping others?



OUR PATH

Inspired to make the world a better place?



LAW | page 30

Juris Doctor
Police & Justice Studies

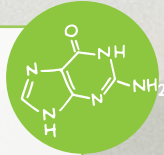


HEALTHCARE | pages 29-30

Nursing
Health Care Assistant
& Practical Nursing (WL)
Respiratory Therapy

SCIENCE | pages 31-32

Applied Sustainable Ranching
(Williams Lake)
Architectural & Engineering Technology
Biological Sciences
Chemistry
Computing Science
Engineering & Applied Science
Mathematics & Statistics
Natural Resource Sciences
Physics & Geology
Veterinary Technology



TRADES & TECHNOLOGY | pages 34-35

Automotive	Millwright
Carpentry	Plumbing
Culinary Arts	Power Engineering
Electrical	Refrigeration & Air Conditioning
Instrumentation	Retail Meat Processing
Horticulture	Water Treatment
Heavy Duty & Commercial	Welding
Transport	
Heavy Mechanical	



OPEN LEARNING | tru.ca/distance

Adult Basic Education
Arts
Business and Management Studies
Education & Social Work
General Studies
Health Sciences
Science
Technology
Tourism



Prefer studying
online?

Curious about
how things work, or
enjoy working with
your hands?

FIND YOUR TRU





You belong here.

Find what you've been looking for, with us. We are here so you can thrive.

5 REASONS TO TRU


50+ years as a post secondary institution 

140+ academic programs on campus

 **60+** online programs

Two outdoor playing courts ready for your basketball, street hockey or pickleball skills

#1 in sustainability

TRU is the first Canadian university to earn the platinum STARS global award twice, making us the highest-rated university in sustainability. 

5 REASONS TO KAMLOOPS

2000+ hours of sunshine per year 

45 minutes to skiing, snowboarding and mountain biking at Sun Peaks – the second largest ski area in Canada

3.5 hours by road or **1 hour** by air from Vancouver

 **175+** mountain biking trails

100+ municipal parks in Kamloops 

#mytru our social media hashtag

YOUR CAMPUS SUPPORT NETWORK



GET THE GUIDANCE YOU NEED to succeed with on-campus resources like the Writing Centre.

PUS

Choosing to attend university can be a big transition, and we're here for you every step of the way.

FIRST STOP: FUTURE STUDENTS OFFICE

Future Student Advisors and Qelmúcw (Indigenous) Future Student Advisors are here to help you navigate first steps.

They can help with:

- Finding the right program
- Choosing courses
- Applications
- Sponsorship support
- Scholarship opportunities
- Registering for courses
- Making your timetable
- Housing and student life
- General TRU information

\$500,000+ is available in entrance scholarships and bursaries each year.

SEE PAGE 38!



Book a virtual appointment

Ask us a question:

850 Sk'lep Trail | 250-828-5006 | tru.ca/future

HERE TO HELP YOU THRIVE

Meet your support network on campus.

Student Services:

- Wellness Centre
- Counselling
- Academic Advising
- Accessibility Services
- Writing Centre
- Math Help Centre
- Early Alert
- Multi-faith Chaplaincy

Be empowered to make informed decisions about your academic and career goals.

Find out more about student services at tru.ca/services

BEYOND THE CLASSROOM



GET YOUR HANDS DIRTY with real-world experience like a co-op with the Sustainability Office.

IE
M



Find out what you want to do—
and maybe what you don't—
before you graduate.

TAKE ADVANTAGE OF:

- Co-op
- Co-op Abroad
- WorkStudy
- Apprenticeship
- Study Abroad
- Internships
- Undergraduate research
- Service learning
- Field schools
- Professional practicums
- Volunteer opportunities

**Connect your
education to the
career you want
through hands-on
learning
experiences.**

Many more at tru.ca/cel

We celebrate the diversity of TRU's students
and offer many ways to get involved.

- Indigenous Awareness Week
- TRU Students' Union (TRUSU)
- Leisure Exploration Activity Program (LEAP)
- CFBX campus radio station
- The Omega student newspaper
- TRUSU Pride
- TRUSU Clubs
- TRU Job Fair
- Annual TRU Powwow
- IDays (International Days)
- Peer mentor programs
- TRU Library Makerspace

**Find your TRU
community
in over 80
different clubs**

BACK TO THE 'PACK



SHARE IN THE 'PACK PRIDE with season-defining moments like winning the 2022 USPORTS Men's Soccer Championship.



Go WolfPack! All TRU students get free admission to regular season home games.

RECREATION

Join WolfPack Recreation for intramural team sports, drop-in sports, or fitness and yoga classes.

Play dodgeball, badminton, volleyball, soccer, basketball, cricket or pickleball. Participate in bootcamp, circuit, strength, stretch, slow flow, dance... take your pick!

tru.ca/recreation

ATHLETICS

WolfPack student athletes and fans contribute to TRU's vibrant campus spirit.

Varsity teams compete at the U SPORTS level, and include basketball, soccer, swimming and volleyball. Club sports include baseball and cheerleading.

If you are interested in trying out for a team, fill out the recruitment form at

gowolfpack.ca





HELLO, IT'S GOOD YOU CAME

TIFFANY HUNKO, SKEETCHESTN, BC

A 2023 graduate of TRU's Applied Sustainability Ranching program, Tiffany is passionate about using regenerative agricultural practices in her growing business.



Here, you'll find a sense of belonging and a home away from home.

WEYT-K, LE7 RE7 STSKITS'Ć

TRU's Kamloops campus is located on the land of the Tk'emlúps te Secwépemc within Secwepemcú'ecw, the traditional and unceded territory of the Secwépemc. We acknowledge and respect our deep connection to the Indigenous communities we live and work with.

TRU is committed to fostering an environment where all students can thrive academically, culturally and personally. With small class sizes and a focus on personal attention, we strive to create an inclusive and supportive learning environment for everyone.

We embrace diversity and welcome Indigenous students from regional Secwépemc, Carrier, T̓silhqot'in, St'át'imc, Okanagan, Nuxalk, Nlaka'pamux, Métis and Inuit communities and from across the country.

tru.ca/indigenous

"I believe there is a place for everyone in post-secondary education. As a former TRU student, I understand how intimidating post secondary can seem. It's my role to make the transition from high school or community to TRU as smooth as possible for you."

– **Jamieson Davidson**

*Qelmúcw (Indigenous)
Future Students Advisor*





Find community at Cplúl'kw'ten

TRU's welcoming Indigenous centre, Cplúl'kw'ten, is a great resource where you'll find comfortable space for socializing, studying and taking a break from your daily routine.

Cplúl'kw'ten hosts an Elder in the House — someone who provides conversation, guidance and wisdom — as well as a dedicated mentoring program and a team of supportive staff. The staff lead learning circles, creating opportunities for collaborative and holistic learning experiences. If you are seeking guidance or support, counselling services are always available.

There are also Qelmúcw advisors available through the Future Students Office, to give support with application and course registration, band funding/sponsorship applications, admissions on the spot, program navigation and more.

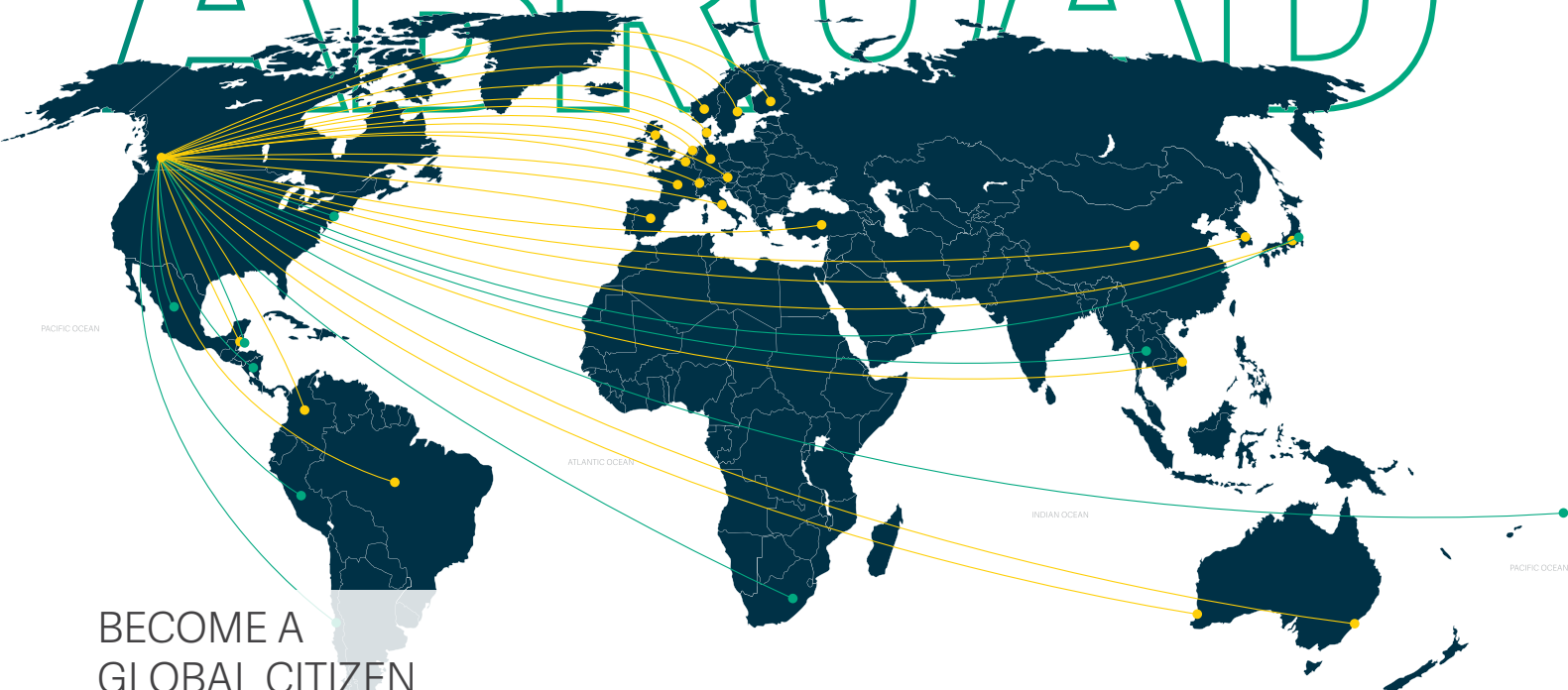
Join us on this educational journey and find a community that values and celebrates Indigenous heritage and traditions while providing the tools and resources for a successful future.

"If you're an Indigenous student considering TRU, know that TRU is a place that values and respects Indigenous culture. TRU has programs, support services and a welcoming community to make you feel at home and supported throughout your educational journey."

– Lex Edwards

*Indigenous Mentor and
Communications Co-ordinator*

STUDY ABROAD



BECOME A GLOBAL CITIZEN

Take a semester or two abroad and embark on an overseas learning journey like no other. Broaden your perspective, strengthen intercultural skills, make new friends and expand job opportunities, all while earning course credits.

Field School placements range from two to six weeks in length and are another great option for an out-of-the-classroom, international experience.

Study Abroad

Australia	Japan
Austria	Korea
Belgium	The Netherlands
Belize	New Zealand
Chile	Norway
China	Spain
Colombia	Sweden
Denmark	Switzerland
Estonia	Poland
Finland	UK
France	USA
Germany	Vietnam
Italy	
Jamaica	

Field Schools

Australia
Belize
Eastern Europe
Italy
Japan
Mexico
Nepal
New Zealand
Peru
USA
Vietnam



Study Abroad and Field School opportunities vary each year.

If you are interested in a country not listed on this map, or want more information on how to get started, contact studyabroad@tru.ca.

tru.ca/studyabroad



YOUR HOME BASE



NEW



SPACES YOU CAN make your own.



The space where you recharge is important. Why not choose campus housing? It's the closest and most convenient option!

CAMPUS HOUSING

Live walking distance from class and join a vibrant, active community of students from all over the world.

Apply to TRU **before January 31, 2024** to be considered for priority on-campus housing for Fall 2024. To be considered, on your TRU application, select 'yes' when asked about being considered for on-campus housing.



Visit tru.ca/housing for more info.

Eat on campus

TRU Housing does not include a meal plan. Each suite has a kitchenette or access to common kitchens, and supermarkets are located a short walk from campus. And right on campus, you'll find 12 different dining options to snack, eat and grab a coffee.

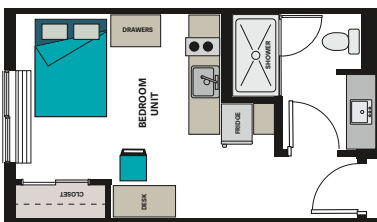
Find out more about food available on campus:

tru.ca/food

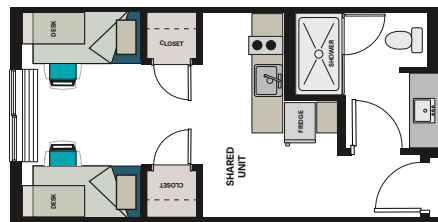
East Village – Dalgleish

The new East Village residence is centrally located and within walking distance of campus, shopping and transit. Each unit has a private entrance, bathroom and apartment-sized kitchen. Shared and single bedroom suites will be available.

East Village - Dalgleish Single Room



East Village - Dalgleish Double Room



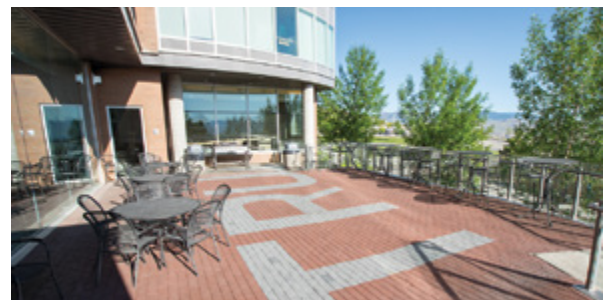
EAST VILLAGE SEPTEMBER – APRIL

Application fee	Single Room	Double Room (shared)
\$100	\$9,710*	\$4,180*

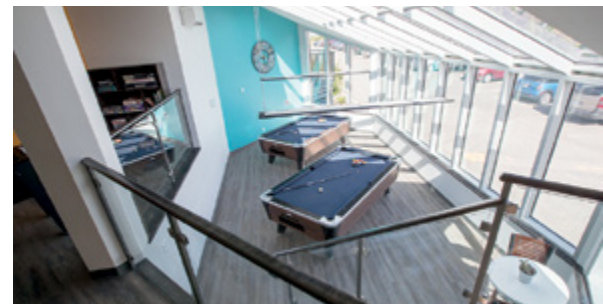
*Rates are for the 2023-24 year and are subject to change without notice. Floor plans may slightly differ from room to room.



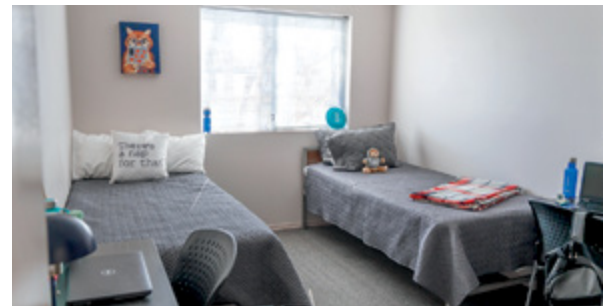
North Tower



McGill Residence



East Village



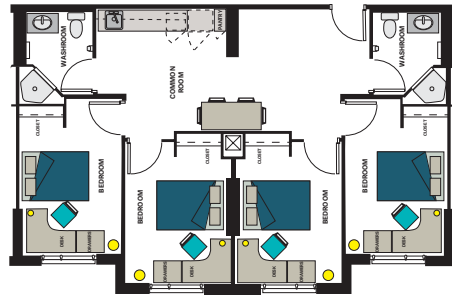
North Tower

Enjoy one of the best views in the city at the 11-storey North Tower. Access premium amenities such as a cardio room, dance studio, patio with large BBQ, games room and regular social activities.

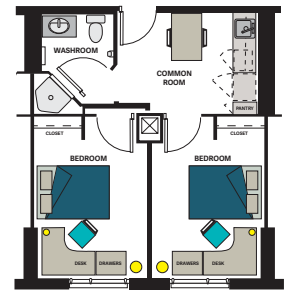
NORTH TOWER SEPTEMBER – APRIL

Application fee 2 or 4 bedroom suite
\$100 \$8,670*

North Tower 4 Bedroom Plan



North Tower 2 Bedroom Plan



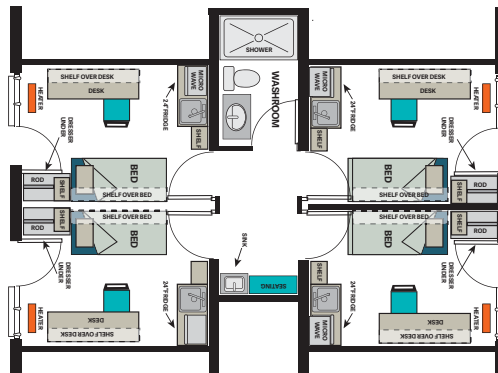
McGill Residence

Ideal for students looking to live in an active, close-knit community. McGill Residence has amenities that include laundry, games room, kitchen and study room.

MCGILL RESIDENCE SEPTEMBER – APRIL

Application fee Room
\$100 \$5,790*

McGill Residence 4 Bedroom Plan



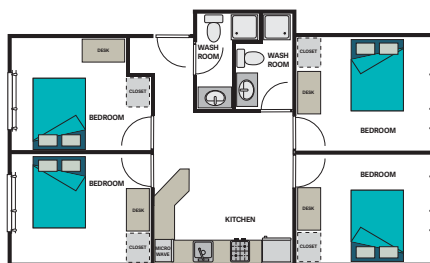
East Village

Have the independence of off-campus living with the convenience of on-campus life at East Village. This location is ideal for students looking for a more independent, mature community with student-friendly amenities.

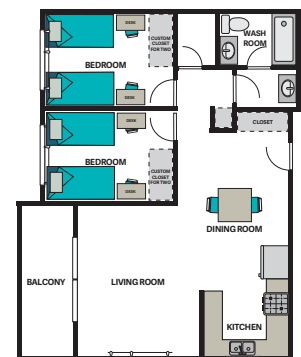
EAST VILLAGE SEPTEMBER – APRIL

Application fee	4 bedroom suite	4 bed, 2 bedroom suite (shared)
\$100	\$6,160*	\$4,180*

East Village 4 Bedroom Plan



East Village 4 Bed, 2 Bedroom (shared) Plan



*Rates are for the 2023-24 year and are subject to change without notice. Floor plans may slightly differ from room to room.

YOUR CHOICE

ON CAMPUS

Come and join us

Take classes in person

Explore campus green space

Choose from 140+ programs

Be part of the campus community

Meet professors face to face

Join clubs and activities

Live close to your classmates

JOIN US ON CAMPUS and take advantage of quiet zones for solo study as well as rooms designed for collaboration.

CHOICE

COMBINE OL & CAMPUS

Your educational path
should be flexible

You can enrol in on-campus programs and take additional Open Learning (OL) courses. You can also learn by distance through Open Learning, and take a few courses on campus.

What works best for you?

Contact us to learn more.

OPEN LEARNING (ONLINE & DISTANCE)

We'll meet you where you're at

Live anywhere

Choose from 60+ programs or 500+ courses

Get academic credit for life or career experiences

Self paced courses

Longer timelines for completion (30 weeks)

Partnership agreements with Canadian
Colleges/Universities

Programs unique to Open Learning:
Bachelor of Health Science, Medical Lab
Assistant, General Studies,
Bachelor of Technology



HOW TO APPLY



GO TO
TRU.CA/APPLY
Application fee: \$32.27

Program admissions are based on three processes:

Non-competitive Admission

The number of students admitted into these programs is **not limited**. Programs have minimum admission requirements, but if you are missing a requirement, upgrading is possible.



Limited Admission

Only a **limited number** of students will be accepted into these programs each year. Admission decisions are made on a first-qualified basis.



Competitive Admission

A **select number** of students are accepted into these programs each year. Your grades will be considered and you may be asked to submit letters of reference, attend an interview, and/or fill out a questionnaire. These programs have a set application deadline.



Open access university

If you don't meet your program requirements, you can upgrade.

In some programs, you may take an upgrading course alongside other first-year courses, so you don't have to wait to begin your studies. If you aren't sure where to start, let us know. We are here for you.

What do you need to get in?

GENERAL ADMISSION REQUIREMENTS

TRU programs generally require BC high school graduation or equivalent. Exceptions to this requirement are shown in the program admission requirements listed on **pages 25-35**.

You may have the equivalent of BC high school graduation if you have completed:

- the BC Adult Graduation (Adult Dogwood) diploma, or previously the ABE Provincial diploma
- the General Education Diploma (GED)

In some circumstances, certain programs may accept students without high school graduation under mature student status.

PROGRAM SPECIFIC ADMISSION REQUIREMENTS

In addition to meeting the general admission requirements you will need to meet your program's specific admission requirements listed on **pages 25-35** or see:

tru.ca/programs

PLY

At TRU everyone has the right to seek their potential.

SECONDARY SCHOOL COURSE EQUIVALENTS

Don't see your completed course listed in the program requirements chart? High schools across Canada have different courses that are equal in value (equivalent) that meet our program requirements.

Be sure to check your courses at:

tru.ca/equivalents

TRU START

BC high school students can take selected TRU programs, or one or two courses, during grade 12.

tru.ca/trustart

ADVANCED STANDING & ENRICHED PROGRAMS

Students who complete enriched secondary school programs can earn transfer credits.

International Baccalaureate: for higher-level courses passed with a grade of 5 or higher

Advanced Placement: for approved subjects passed with a grade of 4 or higher

tru.ca/asep

UNIVERSITY & EMPLOYMENT PREPARATION

University Preparation

Upgrade your skills. Complete the courses you need to enter career, vocational and academic programs, or choose from adult basic education diplomas including the BC Adult Graduation Diploma (the equivalent to high school completion).

tru.ca/uprep

Education and Skills Training

Gain workplace skills and independence with the ESTR program for students with cognitive exceptionalities.

tru.ca/estr

English for Academic Purposes Academic Preparation Program

Develop your ability to understand, speak, read and write English and prepare for academic study in this nationally recognized five-level program.

tru.ca/esl



Why self-identify as Indigenous on your application?

On your application form, you will find an optional section on Indigenous self-identification. Checking "yes" helps advise you about services and events that might be of interest. Some TRU programs also allocate seats to students who identify as Indigenous, and you may also be eligible for priority access to housing. Your information is kept confidential.

Application Deadlines

TRU begins accepting applications for most programs on **OCTOBER 1**.

Unless noted below as a program-specific deadline, deadlines to apply for admission are as follows. Not all programs have winter and summer intakes. Applicants who apply by these deadlines, and submit all required documentation, will receive an admission decision prior to the start of registration. Some programs will continue to accept applications beyond these deadlines where space is available.

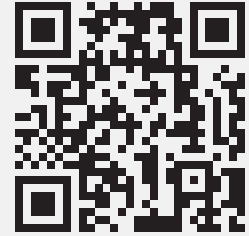
Non-competitive programs

INTAKE	APPLICATION DEADLINE
Fall (September)	May 1
Winter (January)	September 1
Summer (May)	January 1

QUESTIONS?

Contact the
Future Students Team

Toll Free: 1-888-663-1653
futurestudents@tru.ca



<https://www.tru.ca/forms/info-request/>

Program-specific application deadlines

PROGRAM	APPLICATION DEADLINE
Education (Elementary)	January 15 You are encouraged to submit an application before the deadline, but applications are accepted and assessed until the program is full.
Nursing	January 31
Respiratory Therapy	February 1
Veterinary Technology	February 1
Law	February 10
Education (Secondary STEM)	February 15
Social Work	February 28 You are encouraged to submit an application before the deadline, but applications are accepted and assessed until the program is full.
Trades Foundation and Apprenticeship Programs	Applications are accepted year-round. Intake dates vary.
Graduate programs	Intake dates and application deadlines vary. Visit tru.ca/programs/graduate for details.

**Fall (September)
intake only**

APPLY NOW



START WHERE YOUR INTERESTS ARE

PROGRAMS & ADMISSION REQUIREMENTS

Laddering options Students can apply credit earned in this credential towards a higher-level program.	Co-op	Indigenous Admissions Reserved seats for students who self-identify as Indigenous and meet admission requirements.	Study Abroad	Available Online Program or courses are also available through TRU Open Learning.
L	C	IA		

Adventure & Tourism

ADVENTURE GUIDE CERTIFICATE L	ENGLISH	73% in English Studies 12 or English First Peoples 12	
	MATH	Any Math 11	
	ADDITIONAL REQUIREMENTS	Completion of the Adventure Studies Student Information Form; Supplemental documents and attendance of information sessions; 19 years of age by start of program	
	ADMISSION TYPE	Competitive	
ADVENTURE GUIDE DIPLOMA L	ENGLISH	73% in English Studies 12 or English First Peoples 12	
	MATH	Any Math 11	
	ADDITIONAL REQUIREMENTS	Completion of the Adventure Guide Certificate; Adventure Studies Student Information Form Experience Log; Attendance of information session; 19 years of age by start of program	
	ADMISSION TYPE	Competitive	
BACHELOR OF TOURISM MANAGEMENT C	ENGLISH	73% in English Studies 12 or English First Peoples 12	Majors: Adventure Studies, Entrepreneurship, General, Tourism Studies Exit credential after two years: Tourism Management Diploma
	MATH	60% in Foundations of Math 11 or Pre-Calculus 11 or Foundations of Math 12	
	ADDITIONAL REQUIREMENTS	Students with 67% in Pre-Calculus 12 or Foundations of Math 12 will be exempt from MATH 1100	
	ADMISSION TYPE	Limited	
EVENTS & CONVENTIONS MANAGEMENT DIPLOMA L	ENGLISH	73% in English Studies 12 or English First Peoples 12	
	MATH	60% in Foundations of Math 11, Pre-Calculus 11 or Foundations of Math 12	
	ADDITIONAL REQUIREMENTS	Students with 67% in Pre-Calculus 12 or Foundations of Math 12 will be exempt from MATH 1100	
	ADMISSION TYPE	Limited	

Adventure & Tourism, continued

RESORT & HOTEL MANAGEMENT DIPLOMA

L

ENGLISH	73% in English Studies 12 or English First Peoples 12
MATH	60% in Foundations of Math 11, Pre-Calculus 11 or Foundations of Math 12
ADDITIONAL REQUIREMENTS	Students with 67% in Pre-Calculus 12 or Foundations of Math 12 will be exempt from MATH 1100
ADMISSION TYPE	Limited

SPORT EVENT MANAGEMENT DIPLOMA

L

ENGLISH	73% in English Studies 12 or English First Peoples 12
MATH	60% in Foundations of Math 11, Pre-Calculus 11 or Foundations of Math 12
ADDITIONAL REQUIREMENTS	Students with 67% in Pre-Calculus 12 or Foundations of Math 12 will be exempt from MATH 1100
ADMISSION TYPE	Limited

TOURISM MANAGEMENT DIPLOMA

L

ENGLISH	73% in English Studies 12 or English First Peoples 12
MATH	60% in Foundations of Math 11, Pre-Calculus 11 or Foundations of Math 12
ADDITIONAL REQUIREMENTS	Students with 67% in Pre-Calculus 12 or Foundations of Math 12 will be exempt from MATH 1100
ADMISSION TYPE	Limited

Arts, Humanities & Social Sciences

INDIGENOUS STUDIES CERTIFICATE



ENGLISH	73% in English Studies 12 or English First Peoples 12
ADMISSION TYPE	Non-competitive; Upgrading available in program

BACHELOR OF ARTS



✕ C 🗂

ENGLISH	73% in English Studies 12 or English First Peoples 12	<p>Majors or minors: Communication, Economics, Economic & Political Studies, English, Geography & Environmental Studies, History, Mathematics, Mathematics and Economics, Philosophy, Psychology, Sociology, Theatre Arts</p> <p>Concentrations: Creative and Performing Arts, Social Sciences, Humanities, Humanities and Social Sciences</p> <p>Minors only: Archaeology and Geology, Creative Writing, Digital Media Studies, Environmental Economics & Sustainable Development, Geography, Language & Global Studies, Political Studies, Management, Public Relations, Visual Arts</p> <p>Exit credential after two years: Associate of Arts or Associate of Arts Modern Language Degree</p>
ADDITIONAL REQUIREMENTS	Math 11 or higher strongly recommended for students pursuing Education or a major in Geography & Environmental Studies, Sociology or Psychology; Recommended to take any second languages to grade 12	
ADMISSION TYPE	Non-competitive; Upgrading available in program	

Arts, Humanities & Social Sciences, continued

BACHELOR OF COMMUNICATIONS & DIGITAL JOURNALISM 	ENGLISH	73% in English Studies 12 or English First Peoples 12	<i>Majors:</i> Digital Journalism, Media Studies, Public Relations
	ADMISSION TYPE	Non-Competitive	
BACHELOR OF INTERDISCIPLINARY STUDIES 	ENGLISH	73% in English Studies 12 or English First Peoples 12	
	ADDITIONAL REQUIREMENTS	Completion of 60 credits; Third year entry; See tru.ca/programs for admission requirements	
	ADMISSION TYPE	Competitive	
CULTURAL AND SOCIAL EXPLORATIONS CERTIFICATE L	ENGLISH	73% in English Studies 12 or English First Peoples 12	
	ADMISSION TYPE	Non-competitive; Upgrading available in program	
LITERARY AND ART HISTORY CERTIFICATE L	ENGLISH	73% in English Studies 12 or English First Peoples 12	
	ADMISSION TYPE	Non-competitive; Upgrading available in program	
WORLD LANGUAGES AND CULTURES CERTIFICATE	ENGLISH	73% in English Studies 12 or English First Peoples 12	
	ADMISSION TYPE	Non-competitive; Upgrading available in program	

Business, Economics & Management

BACHELOR OF BUSINESS ADMINISTRATION 	ENGLISH	73% in English Studies 12 or English First Peoples 12	<i>Majors or minors:</i> Accounting, Economics, Entrepreneurship, Finance, General Business, Human Resource Management, International Business, Marketing, Supply Chain Management <i>Minors only:</i> Environmental Economics & Sustainable Development, Financial Markets & Institutions, Leadership, Project Management <i>Exit credential after two years:</i> Associate of Commerce and Business Administration Diploma <i>TRU offers a dual degree with the Bachelor of Business Administration and the Bachelor of Computing Science. Students must meet admission requirements for both programs.</i>
	MATH	67% in Foundations of Math 12 or Pre-Calculus 12	
	ADMISSION TYPE	Non-competitive; Upgrading available in program	
ACCOUNTING TECHNICIAN DIPLOMA L 	ENGLISH	73% in English Studies 12 or English First Peoples 12	
	MATH	67% in Foundations of Math 12 or Pre-Calculus 12	
	ADMISSION TYPE	Non-competitive; Upgrading available in program <i>Exit credential after first year:</i> Business Foundations Certificate	

Business, Economics & Management, continued

EXECUTIVE ASSISTANT DIPLOMA	ENGLISH	73% in English Studies 12 or English First Peoples 12
	MATH	67% in Foundations of Math 12 or Pre-Calculus 12
	ADDITIONAL REQUIREMENTS	Completion of the TRU Administrative Assistance Certificate , or equivalent one year certificate program.
	ADMISSION TYPE	Limited

L 

FIRST NATION APPLIED ECONOMICS CERTIFICATE	ENGLISH	73% in English Studies 12 or English First Peoples 12
	MATH	67% in Foundations of Mathematics 11 or Pre-Calculus 11
	ADDITIONAL REQUIREMENTS	Basic computer literacy and familiarity with word processing and spreadsheet software
	ADMISSION TYPE	Non-competitive ; Upgrading available in program

Apply to this program directly through the TULO Center
tulo.ca

FIRST NATION TAXATION ADMINISTRATION CERTIFICATE	ENGLISH	73% in English Studies 12 or English First Peoples 12
	MATH	67% in Foundations of Mathematics 11 or Pre-Calculus 11
	ADDITIONAL REQUIREMENTS	Basic computer literacy and familiarity with word processing and spreadsheet software
	ADMISSION TYPE	Non-competitive ; Upgrading available in program

Apply to this program directly through the TULO Center
tulo.ca

MANAGEMENT DIPLOMA	ENGLISH	73% in English Studies 12 or English First Peoples 12
	MATH	67% in Foundations of Math 12 or Pre-Calculus 12
	ADMISSION TYPE	Non-competitive ; Upgrading available in program <i>Exit credential after first year:</i> Business Foundations Certificate

L 

Education

BACHELOR OF EDUCATION <i>Elementary</i>	ADDITIONAL REQUIREMENTS	Minimum of 90 credits of post-secondary studies acceptable to the School of Education, typically arts, fine arts, math, science, music or physical education; Minimum GPA 2.67; 100 volunteer hours; Letter of Intent; Two confidential statements from referees. See tru.ca/programs for more information
	ADMISSION TYPE	Competitive
	INDIGENOUS COHORT	Available for students who identify as First Nations, Inuit, or Métis.

IA



BACHELOR OF EDUCATION <i>Secondary (STEM)</i>	ADDITIONAL REQUIREMENTS	Four-year Bachelor of Science degree (120 credits) or equivalent in mathematics or science discipline; Minimum GPA of 2.33 on the most recent 60 credits; 100 volunteer hours; Letter of Intent; Spontaneous written and personal interview; Two confidential statements from referees. See tru.ca/programs for more information
	ADMISSION TYPE	Competitive

IA

BACHELOR OF EDUCATION IN TRADES & TECHNOLOGY	ADDITIONAL REQUIREMENTS	See tru.ca/bett for more information
	ADMISSION TYPE	Competitive

**EARLY CHILDHOOD
EDUCATION DIPLOMA**

L

ENGLISH	73% in English Studies 12 or English First Peoples 12
ADDITIONAL REQUIREMENTS	Must be completed prior to the start of the program: 25 hours of volunteer and/or work experience in a licensed childcare facility; Attend an applicant readiness interview
ADMISSION TYPE	Limited

Health Sciences

**BACHELOR OF SCIENCE
IN NURSING**

IA ✈

HIGH SCHOOL APPLICANTS

Students who have graduated high school or have completed university preparatory (UPrep) or adult basic education (ABE) coursework. A blend of UPrep/ABE and high school courses may be considered.

OR

Students with up to 9 credits of post-secondary coursework. GPA from these courses will not apply.

ENGLISH	73% in English Studies 12 or English First Peoples 12
MATH	73% in any Math 12 course
SCIENCE	73% in Anatomy & Physiology 12; 73% in Chemistry 11; 73% in one other science 11 or 12
ADDITIONAL REQUIREMENTS	CASPer Situational Judgement Test; A GPA will be generated using the 5 courses above for admission consideration and ranking
ADMISSION TYPE	Competitive

POST-SECONDARY APPLICANTS

Students with 12 credits or more of post-secondary coursework (by the application deadline)


ADMISSION REQUIREMENTS	Grade 12 (or equivalent) or Mature Student status Overall GPA of 3.0 or higher in the last 30 credits Completion of the following 12 credits: English 1000 level or higher with a C+ minimum Biology 1000 level or higher with a C+ minimum Social Science 1000 or higher with C+ minimum Math/Science 1000 or higher with a C+ minimum Applicants in this category must have the 4 post-secondary courses noted above. A GPA will be generated for post-secondary coursework. If an applicant has more than 30 credits, the most recent 30 credits will be used for GPA consideration and ranking.
ADDITIONAL REQUIREMENTS	CASPer Situational Judgement Test
ADMISSION TYPE	Competitive

**BACHELOR OF HEALTH
SCIENCE**

ADMISSION REQUIREMENTS	Same requirements as Respiratory Therapy Diploma
ADMISSION TYPE	Competitive

Respiratory Therapy Dual Credential


Health Sciences, continued


HEALTH CARE ASSISTANT CERTIFICATE 	ENGLISH	73% in English Studies 11
	ADDITIONAL REQUIREMENTS	Completion of grade 11 minimum; Additional requirements once accepted can be found at tru.ca/hca
	ADMISSION TYPE	Limited

PRACTICAL NURSING DIPLOMA (Williams Lake Campus, next intake September 2024)	ENGLISH	65% in English Studies 12 or English First Peoples 12
	MATH	60% in Foundations of Math 11 or equivalent
	SCIENCE	60% in Anatomy and Physiology 12; Human Anatomy and Physiology for Practical Nurses (PNUR 1300 or HLTH 1121 at TRU with 65%). See tru.ca/programs for additional details
	ADMISSION TYPE	Competitive

RESPIRATORY THERAPY DIPLOMA L	ENGLISH	73% in English Studies 12 or English First Peoples 12
	MATH	67% in Foundations of Math 12 or Pre-Calculus 12
	SCIENCE	67% in Anatomy & Physiology 12; 67% in Physics 11; 67% in Chemistry 12
	ADDITIONAL REQUIREMENTS	All requirements must be within the last 5 years. Required upon acceptance before Aug. 31. CPR Level C with AED; Program Information Session and/or Hospital RT Department Tour; Criminal record check, Immunization forms. Fast track stream available see www.tru.ca/rt for more information.
	ADMISSION TYPE	Competitive

Law & Justice

LAW—JURIS DOCTOR IA 	ADDITIONAL REQUIREMENTS	Obtained an undergraduate degree or successfully completed the first three years (min. 90 credits) or more of an undergraduate degree; Completed application (including CV or resumé and any other requested information) Official transcripts; LSAT score; Personal Statement; Letters of reference; Any other supplemental documents required by your selected category of admissions. See tru.ca/programs for admission requirements
	ADMISSION TYPE	Competitive

POLICE & JUSTICE STUDIES DIPLOMA L IA 	ENGLISH	73% in English Studies 12 or English First Peoples 12
	ADDITIONAL REQUIREMENTS	Statement of Career Objectives; Resumé Note: some required courses require physical fitness standards and may require a criminal record check
	ADMISSION TYPE	Limited

Science & Technology

BACHELOR OF COMPUTING SCIENCE



ENGLISH	73% in English Studies 12 or English First Peoples 12
MATH	67% in Pre-Calculus 12 or Foundations of Math 12 (completed within the last two years)
ADMISSION TYPE	Non-competitive; Upgrading available in program
<i>TRU offers a dual degree with Bachelor of Computing Science and the Bachelor of Business Administration. Students must meet admission requirements for both programs.</i>	

COMPUTING SCIENCE DIPLOMA



ENGLISH	73% in English Studies 12 or English First Peoples 12
MATH	67% in Pre-Calculus 12 or Foundations of Math 12 (completed within the last two years)
ADMISSION TYPE	Non-competitive; Upgrading available in program

BACHELOR OF ENGINEERING IN SOFTWARE ENGINEERING



ENGLISH	73% in English Studies 12 or English First Peoples 12
MATH	67% in Pre-Calculus 12
SCIENCE	67% in Chemistry 11; 67% in Physics 11
ADDITIONAL REQUIREMENTS	Physics 12 with 67% preferred. Recommended courses: Calculus 12, Drafting 12, a computing or information technology course involving computer programming and problem solving using high-level languages such as C/C++, Visual Basic, or Java
ADMISSION TYPE	Competitive

ARCHITECTURAL & ENGINEERING TECHNOLOGY DIPLOMA

ENGLISH	73% in English Studies 12 or English First Peoples 12
MATH	67% in Foundations of Math 12 or Pre-Calculus 11
SCIENCE	Physics 11
ADMISSION TYPE	Limited

ENGINEERING TRANSFER - YEAR 1



ENGLISH	73% in English Studies 12 or English First Peoples 12
MATH	73% in Pre-Calculus 12
SCIENCE	73% in Chemistry 11 (Chemistry 12 is highly recommend); 73% in Physics 12
ADDITIONAL REQUIREMENTS	Students lacking Chemistry 12 may still be admitted, but will be unable to complete the first-year courses in two semesters
ADMISSION TYPE	Competitive

BACHELOR OF NATURAL RESOURCE SCIENCE



ENGLISH	73% in English Studies 12 or English First Peoples 12
MATH	67% in Pre-Calculus 12
SCIENCE	67% in Life Sciences 11; 67% in Chemistry 11
ADDITIONAL REQUIREMENTS	Note: students with Anatomy & Physiology 12, and Chemistry 12 will be given preference.
ADMISSION TYPE	Limited Note: if you do not meet all requirements, you may still be considered for admission.

APPLIED SUSTAINABLE RANCHING DIPLOMA

(Williams Lake Campus)

ENGLISH	English Studies 12 or English First Peoples 12
MATH	60% in Foundations of Math 11
ADDITIONAL REQUIREMENTS	Work placement on a working farm or ranch (Program Coordinator can assist you in finding a suitable placement)
ADMISSION TYPE	Limited

Science & Technology, continued

VETERINARY TECHNOLOGY DIPLOMA



ENGLISH	67% in English Studies 12 or English First Peoples 12
MATH	67% in Foundations of Math 11
SCIENCE	67% in Life Sciences 11
ADDITIONAL REQUIREMENTS	Anatomy & Physiology 12 is recommended; Canadian citizenship or permanent resident status; Know/Wonder/Learn document; Interview with a RVT; Intro/Q&A video; Two reference letters (one general, one work-related)
ADMISSION TYPE	Competitive

ANIMAL WELFARE CERTIFICATE

Available by Distance Education

ADDITIONAL REQUIREMENTS	Completion of grade 12 or Mature Student Status recommended
ADMISSION TYPE	Limited

FIRST NATIONS APPLIED LAND MANAGEMENT CERTIFICATE

Apply to this program directly through the TULO Center tulo.ca

ENGLISH	73% in English Studies 12 or English First Peoples 12
MATH	67% in Foundations of Mathematics 11 or Pre-Calculus 11
ADDITIONAL REQUIREMENTS	Basic computer literacy and familiarity with word processing and spreadsheet software
ADMISSION TYPE	Non-competitive ; Upgrading available in program

BACHELOR OF SCIENCE



ENGLISH	73% in English Studies 12 or English First Peoples 12	Majors and minors: Animal Biology, Biology, Cellular, Molecular & Microbial Biology, Chemistry, Chemical Biology, Ecology & Environmental Biology, Environmental Chemistry, General Science
MATH	67% in Pre-Calculus 12	
SCIENCE	Life Sciences 11 or Anatomy & Physiology 12 with C+; Chemistry 11; Physics 11	
ADMISSION TYPE	Non-competitive ; Upgrading available in program	

ENGLISH	73% in English Studies 12 or English First Peoples 12	Majors: Computing Science, Computing Science & Mathematics, Data Science, Mathematics, Mathematics & Economics, Mathematical Sciences, Physics
MATH	67% in Pre-Calculus 12	
SCIENCE	Chemistry 11; Physics 11	Minors only: Environmental Economics & Sustainable Development, Management, Archaeology and Geology
ADMISSION TYPE	Non-competitive ; Upgrading available in program	

Exit credential after two years: Associate of Science

Social Work & Human Service

BACHELOR OF SOCIAL WORK

ADDITIONAL REQUIREMENTS

Year 3 entry; A minimum of 54 credits (60 credits recommended); The credit requirement can be met by general university studies, or a combination of human service certificate/diploma or equivalent with a minimum GPA of 2.67 and general university course work; General university course work must include 3 credits of academic English composition (ENGL 1100 at TRU) or 6 credits of English literature, and SOCW 2060 and SOCW 2120 or equivalent; A minimum GPA of 2.33 on general university coursework is required

IA

ADMISSION TYPE

Competitive

EDUCATION ASSISTANT AND COMMUNITY SUPPORT CERTIFICATE

ENGLISH

73% in English Studies 12 or English First Peoples 12

ADDITIONAL REQUIREMENTS

Two reference letters; criminal record check, immunization record, Canadian citizenship or permanent resident status

L

ADMISSION TYPE

Limited

HUMAN SERVICE DIPLOMA

ENGLISH

73% in English Studies 12 or English First Peoples 12

ADDITIONAL REQUIREMENTS

Two references; Canadian citizenship or permanent resident status

L

ADMISSION TYPE

Limited

University & Employment Preparation

EDUCATION AND SKILLS TRAINING CERTIFICATE PROGRAM (ESTR)

ADDITIONAL REQUIREMENTS

High school transcripts, reference letter, work or volunteer experience.

ADMISSION TYPE

Limited

ENGLISH FOR ACADEMIC PURPOSES

ADDITIONAL REQUIREMENTS

See tru.ca/eap for admission requirements

ADMISSION TYPE

Non-competitive

UNIVERSITY PREPARATION (UPGRADING)

ADDITIONAL REQUIREMENTS

At least 17 years of age or one year out of school; Canadian citizen; permanent resident

ADMISSION TYPE

Non-competitive



Trades & Industrial Technology

ACCUPLACER is a computer-adaptive test designed to evaluate skills in reading, writing and mathematics. It is the entry assessment for trades certificate and diploma applicants.

To schedule a test session, contact assess@tru.ca

tru.ca/trades

FOUNDATION CERTIFICATES IN CONSTRUCTION, MECHANICAL & WELDING TRADES

MINIMUM ADMISSION REQUIREMENTS Successful Entry Assessment
ADMISSION TYPE **Limited**

Automotive Service Technician, Electrician, Heavy Mechanical (Diesel Engine, Heavy Duty Equipment, Transport Trailer Technician, Truck and Transport Mechanic), Industrial Mechanic (Millwright/Machinist), Instrumentation and Control Technician, Refrigeration and Air Conditioning, Piping (Plumber, Steamfitter/Pipefitter, Pipefitter), Residential Construction (Carpenter Level 1 & 2), Welder

APPRENTICESHIPS IN CONSTRUCTION, MECHANICAL & WELDING TRADES

MINIMUM ADMISSION REQUIREMENTS Valid SkilledTradesBC number (indentured/sponsored by an employer); Working in your trade
ADMISSION TYPE **Limited**

Automotive Service Technician, Carpenter, Circular Saw Filer, Diesel Engine Mechanic, Electrician – Construction, Electrician – Industrial, Gasfitter A (Level 3), Gasfitter B (Level 1 & 2), Heavy Duty Equipment Technician, Industrial Mechanic (Millwright), Instrumentation and Control Technician, Meatcutter, Plumber, Refrigeration and Air Conditioning Mechanic, Steamfitter/Pipefitter, Truck and Transport Mechanic, Transport Trailer Technician, Welder

L

HORTICULTURE CERTIFICATE

MINIMUM ADMISSION REQUIREMENTS BC grade 12 or equivalent, or Mature Student Status. Attend a program orientation session; Recommended: be in good physical condition and have a strong interest in plants and hands-on work
ADMISSION TYPE **Limited**

L

HORTICULTURE MANAGEMENT DIPLOMA

MINIMUM ADMISSION REQUIREMENTS Completion of a recognized one-year horticulture certificate which includes six credits of approved post-secondary English courses; Some diploma courses may require specific pre-requisites
ADMISSION TYPE **Limited**

POWER ENGINEERING 4TH CLASS CERTIFICATE

MINIMUM ADMISSION REQUIREMENTS BC grade 12 or equivalent, Math 11 or Pre-Calculus 12, successful entry assessment
ADMISSION TYPE **Limited**

PROFESSIONAL COOK LEVEL 1 & 2 CULINARY ARTS CERTIFICATE

MINIMUM ADMISSION REQUIREMENTS Grade 10 (grade 12 preferred) or Mature Student Status; Entry assessment for Math and English may be required; Interview with program coordinator, Food Safe Level 1 required by first week of classes.
ADMISSION TYPE **Limited**

Trades & Industrial Technology, continued

**RETAIL MEAT
PROCESSING
FOUNDATION
CERTIFICATE**

**ADDITIONAL
REQUIREMENTS**

Grade 10 (grade 12 preferred); Food Safe Level 1; Successful Entry Assessment; Canadian citizenship or permanent resident status; Interview and Orientation with program coordinator

ADMISSION TYPE

Limited

**WATER & WASTEWATER
TECHNOLOGY DIPLOMA**

**MINIMUM ADMISSION
REQUIREMENTS**

BC grade 12 or equivalent

ADMISSION TYPE

Limited

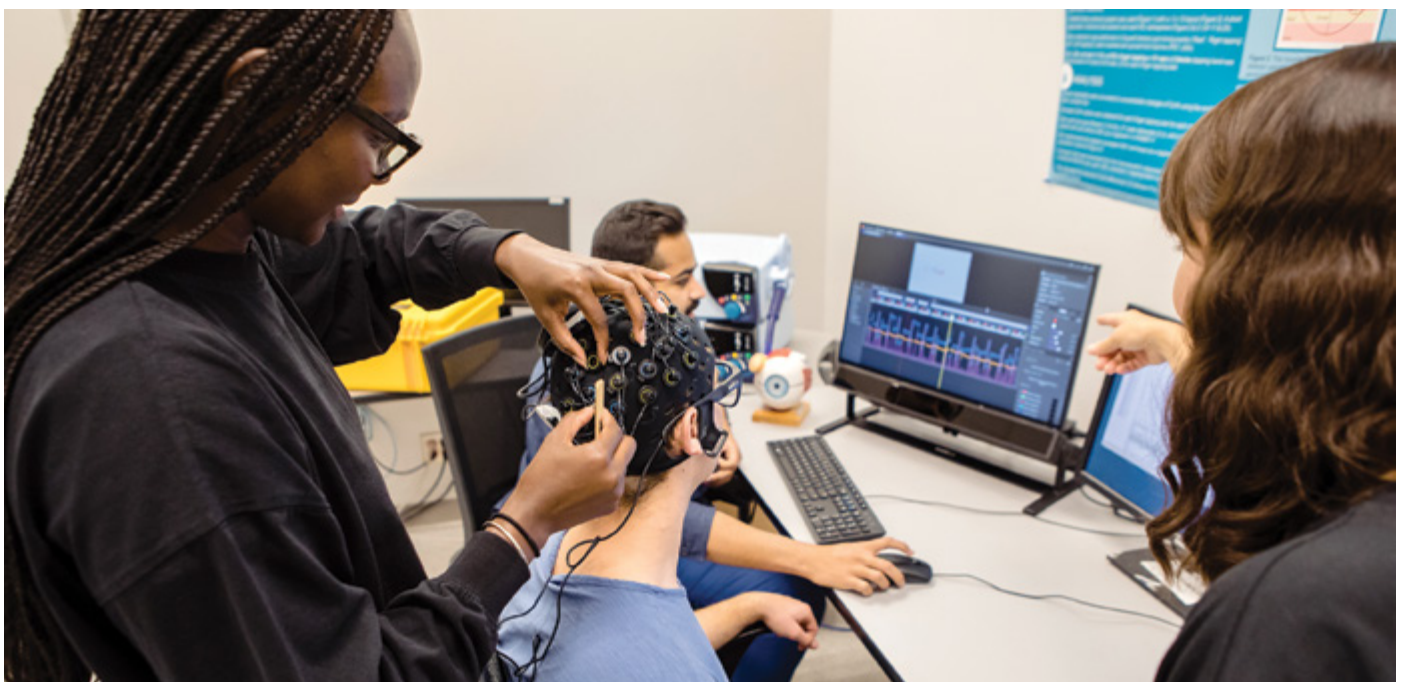
**WATER & WASTEWATER
UTILITIES CERTIFICATE**

**MINIMUM ADMISSION
REQUIREMENTS**

BC grade 12 or equivalent

ADMISSION TYPE

Limited



Graduate and Post-graduate Programs

Take your education to the next level. Our collaborative research culture and integrated approach to graduate studies, innovation and knowledge translation provide the dynamic learning environment necessary for inquiry, discovery and leadership in your field.

tru.ca/gradstudies

[Master of Arts in Human Rights and Social Justice](#)

[Master of Business Administration](#)

[Master of Education](#)

[Master in Environmental Economics & Management](#)

[Master of Nursing](#)

[Master of Nursing - Nurse Practitioner](#)

[Master of Science in Data Science](#)

[Master of Science in Environmental Economics & Management](#)

[Master of Science in Environmental Science](#)

[Certificate in Educational Studies](#)

[Diploma in Business Administration](#)

ADMISSION REQUIREMENTS

See tru.ca/graduate for admission requirements for master's degrees

ADMISSION TYPE Competitive

\$180,000

in scholarships available exclusively
to graduate students

Post-Baccalaureate Programs

ADMISSION TYPE Varies by program

Visit tru.ca/programs for more information.

Post-Baccalaureate Diplomas: Accounting, Adventure Studies, Applied Data Science, Business Administration, Economics, Economics & Political Studies, Entrepreneurship, Finance, Human Resource Management, International Business, Managing Festivals & Events, Marketing, Math & Economics, Supply Chain Management, Tourism Destination Development

Post-Baccalaureate Certificates: Teaching English to Speakers of Other Languages (TESL), Tourism

Post-Diploma Certificates: Infant and Toddler Educator, Special Needs Educator



Know Your Costs

University is an investment into your future. At TRU, you receive an excellent education, and we are proud to offer competitive tuition and student fees.

All programs are different, and tuition fees vary based on the

number of credits you choose to take each semester, and whether you have required labs.

Learn more about tuition and fees — and try out our interactive Cost Estimator — at tru.ca/tuition

HOW MUCH WILL FIRST YEAR COST?

DEGREE



TUITION
\$4,668
FEES
\$1,397

*Includes U-Pass and Medical and Dental



BOOKS & SUPPLIES
\$1,000



RESIDENCE
\$5,128 - \$9,550

Estimated expenses are based on two semesters with five courses each in the Bachelor of Arts program

TRADES



TUITION
\$437/mo
FEES
\$134/mo



BOOKS & SUPPLIES
\$100-1,500



RESIDENCE
\$5,128 - \$9,550

Estimated expenses are based on fees for vocational full time programs which range from 6-10 months in length.



Plan your own budget for a year at TRU | tru.ca/cost



Student Awards & Financial Aid

UNDERGRADUATE ENTRANCE | Applications open mid December



Don't miss out!
Be sure to check opening dates and deadlines and apply ahead of time:

tru.ca/entrance

General Undergraduate Entrance Scholarships

Recognizes academic excellence, leadership, service and accomplishments that foster TRU's values

UP TO \$30,000 PER AWARD

TRU Assurance Bursaries

For new and returning bachelor degree students, with preference to students enrolled in open programs, and/or from the TRU region

UP TO \$20,000 PER BURSARY

TRU Undergraduate Entrance Awards

Recognizes leadership, service and accomplishments that foster TRU's values, with preference to first generation university students

UP TO \$4,000 PER AWARD

TRU Undergraduate Entrance Bursaries

For new, full-time, diploma or baccalaureate degree students facing financial hardship

UP TO \$4,000 PER BURSARY

**For full-time, campus degree or diploma students who are Canadian citizens or permanent residents*

DEADLINES TO APPLY FOR SCHOLARSHIPS, AWARDS AND BURSARIES

Entrance Scholarships
March 1, 2024

Entrance Awards
April 1, 2024

Assurance Bursary
End of May 2024

	TYPE	Non-Repayable	Repayable	Application Required	Academic Achievement	Financial Need	Additional Requirements
DEFINITIONS	AWARD	✓		✓	recognizing academic and/or extracurricular accomplishment 2.00 GPA or equivalent		minimum 60% course load
	BURSARY	✓		✓	2.00 GPA or equivalent	✓	minimum 60% course load (usually) already approved for government student loans (usually)
	SCHOLARSHIP	✓		✓ SOMETIMES	3.50 GPA minimum		minimum 80% course load and it is to be used for further study (usually)
	GRANT	✓		✓ NORMALLY	2.00 GPA or equivalent	✓	
	LOAN		✓	✓		✓	meet criteria such as residence, program of study, course load, adequate performance in studies
	PRIZE	✓				recognizing academic achievement in program of study	



IN-COURSE SCHOLARSHIPS, BURSARIES AND AWARDS

OVER \$1,500,000

AVAILABLE TO ALL TRU STUDENTS WHO HAVE COMPLETED AT LEAST ONE FULL-TIME SEMESTER

CO-OPERATIVE EDUCATION (CO-OP)

Co-operative Education blends on-campus learning with practical applied learning. Enhance your education with career-related work experience before graduation.

Students alternate study terms with paid, monitored work-terms in professional industry, non-profit, private business, and public sector organizations.

tru.ca/coop

WORKSTUDY

WorkStudy is a TRU-funded financial assistance program which offers an opportunity for Canadian students to work part-time on campus in positions that accommodate their studies.

tru.ca/awards/work-study

FUNDING OPTIONS FOR INDIGENOUS STUDENTS

There are many avenues for funding your education. Some Indigenous students are eligible to receive support from their band or other organizations to pay for post-secondary education.

SPONSORSHIP

Confirm the process your Nation follows for post-secondary funding, then connect with us. Contact your band, Métis or other organization for information regarding the application process. You will need to submit a *Consent to Release Personal Information Form (Third Party)* so your sponsor has access to your TRU information. Your sponsor will need to submit the *TRU Sponsorship Application* form before

your registration date, otherwise you will have to pay the necessary commitment fee to complete your registration. It will take approximately two weeks for TRU to set up your tuition sponsorship contract. It is your responsibility to ensure your sponsor receives your course registration data form, which is their invoice for your costs.

Possible funding sources for Indigenous students - Undergraduate Degree Programs

	YEAR 1	YEAR 2	YEAR 3	YEAR 4
Band funding	✓	✓	✓	✓
Métis funding	✓	✓	✓	✓
Scholarships and awards	✓ (Entrance)	✓ (Ongoing)	✓ (Ongoing)	✓ (Ongoing)
External sources, e.g., Indspire, Irving K. Barber Award, New Relationship Trust (BC First Nations)	✓	✓	✓	✓
Student aid	✓	✓	✓	✓
Work study	✓	✓	✓	✓
Co-op		✓	✓	✓



Talk to our Qelmúcw (Indigenous) Future Student Advisor for more information, or if you are interested in diploma or certificate programs, as funding schedules may differ.

WANT MORE FUNDING OPTIONS?
tru.ca/awards/external-funding
 to find external award resources.

QUESTIONS?

Contact Student Awards & Financial Aid
 250-828-5024 | entrance@tru.ca



"After completing my undergraduate degree at TRU, it was an easy decision to return for a law degree. I got to know members of the community while playing volleyball for the WolfPack, so I knew exactly how welcoming and supportive Kamloops is of its students."

Katie Matthews
Juris Doctor
Surrey, BC





Fall 2024 | Future Student Timeline

YOUR STEPS TO BECOMING A TRU STUDENT



1) Explore programs

- Connect with a Future Student Advisor or Qelmúcw Student Advisor
tru.ca/programs



2) Join a Discover TRU or program information session

- tru.ca/infosessions

3) Choose your program and review admission requirements

- Admission Requirements | tru.ca/reqs
- From out of province? Review equivalencies | tru.ca/equivalents

4) Apply

- Apply online on or after **October 1** | tru.ca/apply
- Pay the application fee

5) Submit documents

- Submit high school and/or post-secondary transcripts and additional requirements
tru.ca/transcript
- Track application status in myTRU account | mytru.ca

6) Offer of Admission

- Early offers for non-competitive programs start in December
- Competitive and limited admission programs vary by application deadline
- If an offer isn't made, connect with the Future Students Team to discuss your options

DON'T FORGET!

Apply for Entrance Scholarships and Awards

- Applications open in December
- Entrance Scholarship deadline: **March 1**
- Entrance Award deadline: **April 1**

Explore on campus housing options

- Priority housing if you apply to TRU by **January 31** | tru.ca/housing

Need help?

Book an appointment with the Future Students Team



Scan QR to book



QUESTIONS? CONTACT US!



Future Students Office

Thompson Rivers University
850 Sk'lep Trail, Kamloops, BC
V2C 0C8 Canada
250-828-5006
1-888-663-1653

futurestudents@tru.ca
futureindigenous@tru.ca

tru.ca/future

FOLLOW US ON SOCIAL MEDIA



@ThompsonRiversU

#mytru

Accessibility Services
250-828-5023
as@tru.ca

Assessment Centre (Accuplacer)
250-828-5470
assess@tru.ca
tru.ca/assessment

Student Awards
250-828-5024
finaid@tru.ca
tru.ca/awards

Housing
tru.ca/housing

Career and Experiential Learning
250-371-5627
careereducation@tru.ca
tru.ca/cel

Campus Visits
tru.ca/tours

